

# Phylogeography of the *Lacerta viridis* complex: mitochondrial and nuclear markers provide taxonomic insights

Ellen Marzahn, Werner Mayer, Ulrich Joger, Çetin Ilgaz, Daniel Jablonski, Carolin Kindler, Yusuf Kumlutaş, Annamaria Nistri, Norbert Schneeweiß, Melita Vamberger, Anamarija Žagar, Uwe Fritz

## Supporting Information

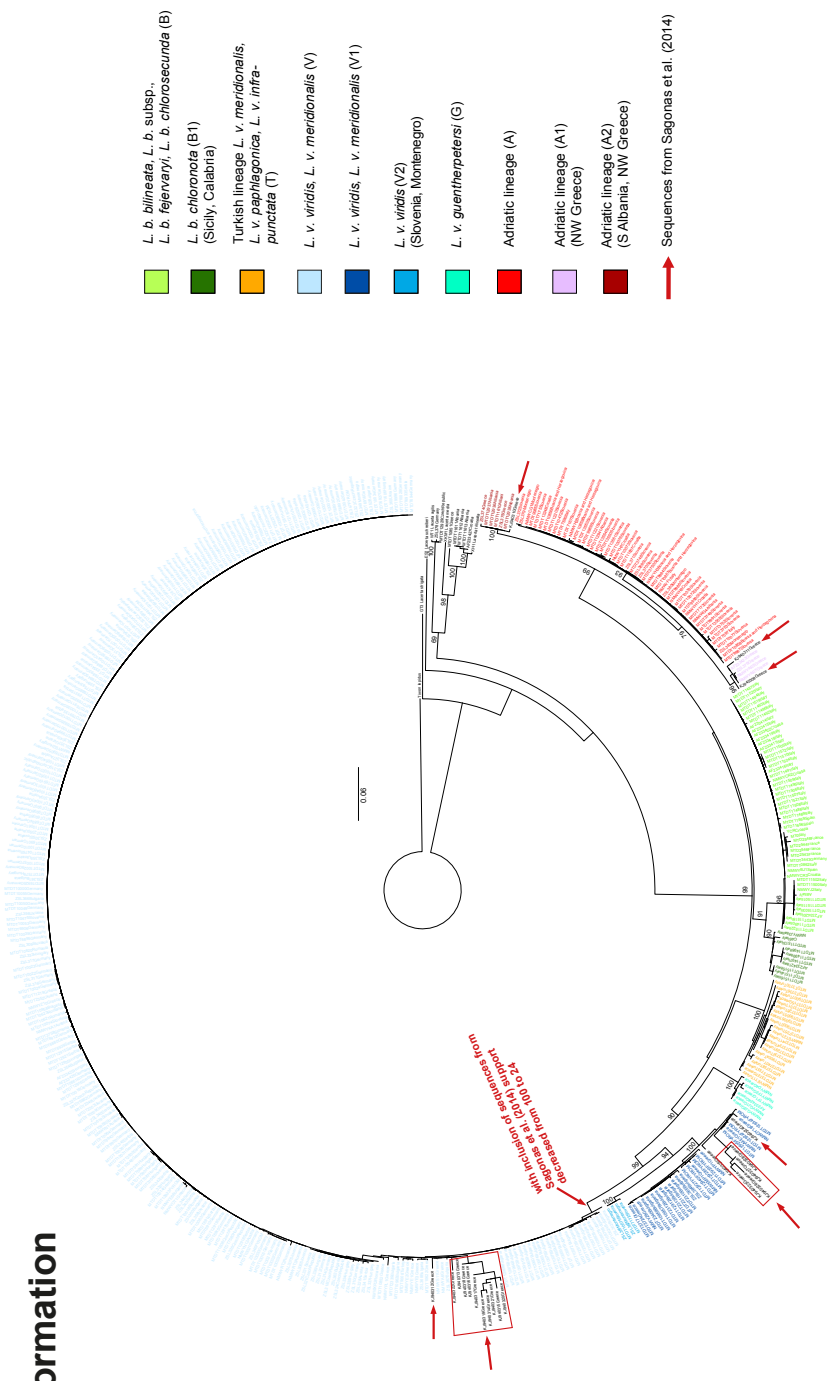


Fig. S1. Maximum Likelihood tree for the complete data set of 475 *cyt b* sequences, including the data from Sagonas et al. (2014). Numbers along branches are bootstrap values. Note the long branches of many sequences from Sagonas et al. (2014) and the significantly decreased support for clade V. For explanation of sample codes, see Table S1