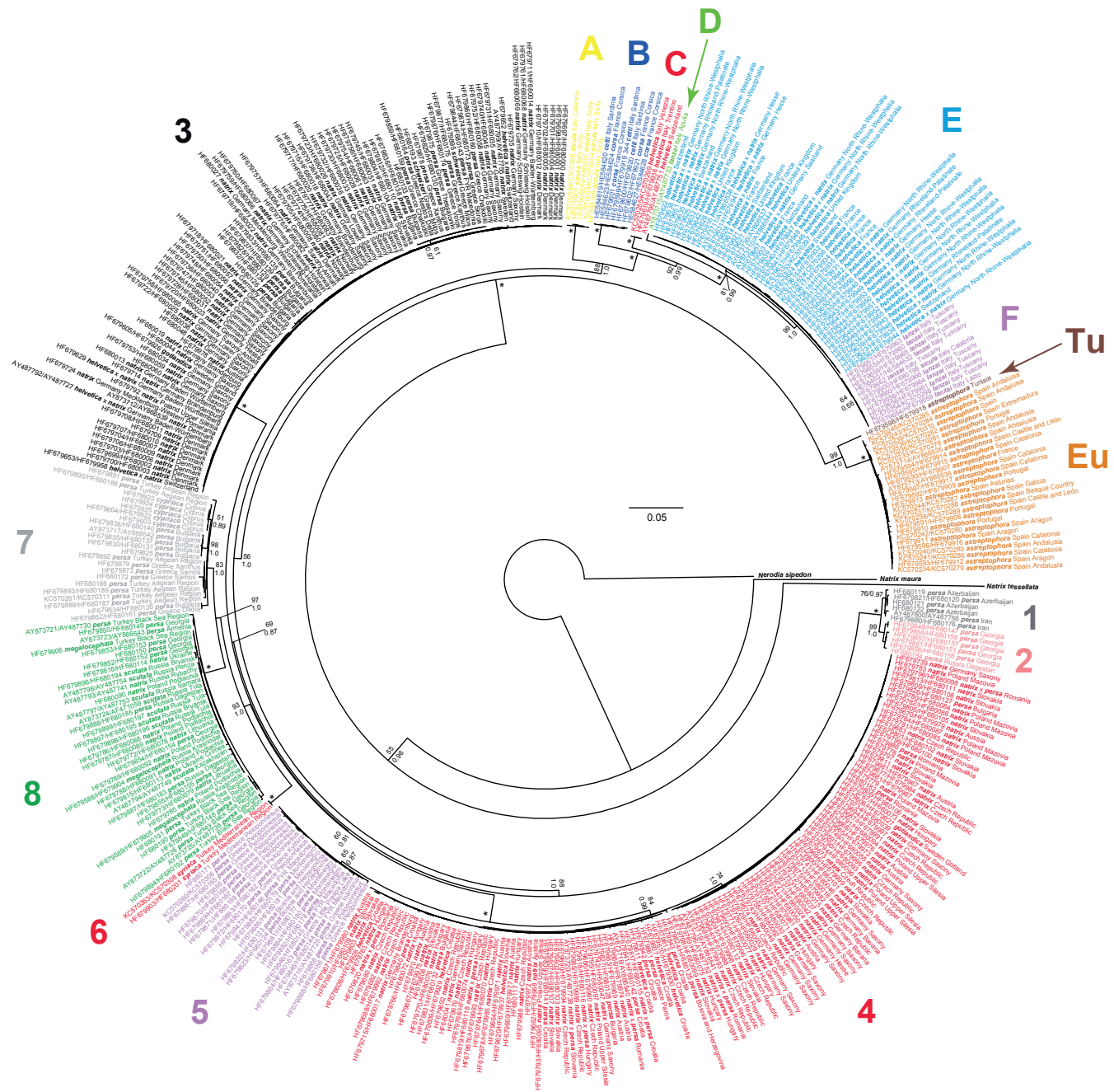


**Mitochondrial phylogeography, contact zones and taxonomy  
of grass snakes (*Natrix natrix*, *N. megaloccephala*)**

CAROLIN KINDLER, WOLFGANG BÖHME, CLAUDIA CORTI, VÁCLAV GVOŽDÍK, DANIEL JABLONSKI,  
DAVID JANDZIK, MARGARITA METALLINOU, PAVEL ŠIROKÝ & UWE FRITZ

***Zoologica Scripta***

**Supporting Information**



**Fig. S1** Maximum Likelihood tree, depicting relationships of all 410 samples of *Natrix natrix* and *N. megaloccephala*. Sample codes are GenBank accession numbers (Table S1). Colours correspond to Figure 2 except for clade 3, which is shown in black. For further explanations, see Figure 2.

**Table S1** Grass snake samples studied and GenBank accession numbers of their DNA sequences

Taxon	Collecting site	Clade	Genbank accession numbers			Reference
			Voucher	ND4+tRNAs	Cyt <i>b</i>	
<i>Natrix megalcephala</i> Orlov & Tuniyev, 1987	Russia: Krasnodar: Otdalyonnyy	8	ZFMK 60732	HF679588	HF679904	This study
<i>Natrix megalcephala</i> Orlov & Tuniyev, 1987	Russia: Krasnodar: Tuapse	8	ZFMK 58029	HF679589	HF679905	This study
<i>Natrix megalcephala</i> Orlov & Tuniyev, 1987	Turkey: Black Sea Region: Hopa	8	MTD D 32025	-----	HF679906	This study
<i>Natrix natrix astreptophora</i> (Seoane, 1884)	France: Argelès-sur-Mer	Eu	ZFMK 89090	HF679590	HF679907	This study
<i>Natrix natrix astreptophora</i> (Seoane, 1884)	Portugal: S Setúbal: Torre	Eu	ZFMK 87516	HF679591	HF679908	This study
<i>Natrix natrix astreptophora</i> (Seoane, 1884)	Portugal: Santo Aleixo Restauracao	Eu	-----	KC570235	KC570281	This study
<i>Natrix natrix astreptophora</i> (Seoane, 1884)	Portugal: Serra de Sintra	Eu	ZFMK 91113	HF679592	HF679909	This study
<i>Natrix natrix astreptophora</i> (Seoane, 1884)	Portugal: W Loure	Eu	ZFMK 91112	-----	HF679910	This study
<i>Natrix natrix astreptophora</i> (Seoane, 1884)	Spain	Eu	-----	KC570239	KC570310	This study
<i>Natrix natrix astreptophora</i> (Seoane, 1884)	Spain: Andalusia: Cádiz Province	Eu	MNCN 13796	AY873714	AY866535	Guicking <i>et al.</i> (2006)
<i>Natrix natrix astreptophora</i> (Seoane, 1884)	Spain: Andalusia: Granada: Orijiva	Eu	-----	KC570240	KC570283	This study
<i>Natrix natrix astreptophora</i> (Seoane, 1884)	Spain: Andalusia: Jaén: Fresnedilla wood	Eu	-----	KC570243	KC570284	This study
<i>Natrix natrix astreptophora</i> (Seoane, 1884)	Spain: Andalusia: Río Guadalmez near Córdoba	Eu	-----	KC570245	KC570285	This study
<i>Natrix natrix astreptophora</i> (Seoane, 1884)	Spain: Andalusia: Sevilla	Eu	-----	KC570233	KC570278	This study
<i>Natrix natrix astreptophora</i> (Seoane, 1884)	Spain: Andalusia: Sierra de Grazalema: Río Guadalete	Eu	-----	KC570234	KC570279	This study
<i>Natrix natrix astreptophora</i> (Seoane, 1884)	Spain: Aragon	Eu	ZFMK 65694	-----	HF679911	This study
<i>Natrix natrix astreptophora</i> (Seoane, 1884)	Spain: Aragon: Jaca: San Juan de la Peña	Eu	-----	KC570242	KC570280	This study
<i>Natrix natrix astreptophora</i> (Seoane, 1884)	Spain: Aragon: Nerín	Eu	MTD T 9650	HF679593	HF679912	This study
<i>Natrix natrix astreptophora</i> (Seoane, 1884)	Spain: Asturias: Canges de Onís	Eu	MTD D 35537	-----	HF679913	This study
<i>Natrix natrix astreptophora</i> (Seoane, 1884)	Spain: Basque Country: Treviño	Eu	-----	KC570237	KC570288	This study
<i>Natrix natrix astreptophora</i> (Seoane, 1884)	Spain: Castile and León: Cilleruelo de Bezanac	Eu	-----	KC570238	KC570289	This study
<i>Natrix natrix astreptophora</i> (Seoane, 1884)	Spain: Castile and León: Layna	Eu	ZFMK 79781	HF679594	HF679914	This study
<i>Natrix natrix astreptophora</i> (Seoane, 1884)	Spain: Catalonia: Blanes	Eu	ZFMK 90573	HF679595	HF679915	This study
<i>Natrix natrix astreptophora</i> (Seoane, 1884)	Spain: Catalonia: Ebro Delta	Eu	ZFMK 60734	HF679596	HF679916	This study
<i>Natrix natrix astreptophora</i> (Seoane, 1884)	Spain: Catalonia: Osona	Eu	MVZ 200534	AY873713	AY866536	Guicking <i>et al.</i> (2006)
<i>Natrix natrix astreptophora</i> (Seoane, 1884)	Spain: Catalonia: Tortosa: Port de Comte	Eu	ZFMK 64913	HF679597	HF679917	This study
<i>Natrix natrix astreptophora</i> (Seoane, 1884)	Spain: Catalonia: Tremp	Eu	-----	KC570241	KC570286	This study
<i>Natrix natrix astreptophora</i> (Seoane, 1884)	Spain: Extremadura: Higuera de Vargas	Eu	-----	KC570236	KC570282	This study
<i>Natrix natrix astreptophora</i> (Seoane, 1884)	Spain: Galicia: Ourense: Reparade	Eu	-----	KC570244	KC570287	This study
<i>Natrix natrix astreptophora</i> (Seoane, 1884)	Tunisia: Cap Serrat	Tu	ZFMK 67196	HF679598	HF679918	This study
<i>Natrix natrix cetti</i> Gené, 1883	Italy: Sardinia: Belvi (Nuoro)	B	MZUF 40268	HE584619	HE584620	Fritz <i>et al.</i> (2012)

■ Table S1 continued ■			Genbank accession numbers			
Taxon	Collecting site	Clade	Voucher	ND4+tRNAs	Cyt <i>b</i>	Reference
<i>Natrix natrix cetti</i> Gené, 1883	Italy: Sardinia: Limbara Mountains	B	ZFMK 60736	HF679599	HF679919	This study
<i>Natrix natrix cetti</i> Gené, 1883	Italy: Sardinia: Limbara Mountains	B	ZFMK 60737	HF679600	HF679920	This study
<i>Natrix natrix corsa</i> (Hecht, 1930)	France: Corsica: Étang de Loto	B	MTD T 9902	HF679601	-----	This study
<i>Natrix natrix corsa</i> (Hecht, 1930)	France: Corsica: Gulf of Sagone	B	MTD D 39091	HF679602	HF679921	This study
<i>Natrix natrix corsa</i> (Hecht, 1930)	France: Corsica: Porto-Vecchio	B	MTD D 35388	HE584623	HE584624	Fritz <i>et al.</i> (2012)
<i>Natrix natrix corsa</i> (Hecht, 1930)	France: Corsica: Santa Giulia	B	MTD D 42489	HE584627	HE584628	Fritz <i>et al.</i> (2012)
<i>Natrix natrix cypriaca</i> (Hecht, 1930)	Cyprus: Larnaka: Paralimni	7	ZFMK 76296	HF679603	-----	This study
<i>Natrix natrix cypriaca</i> (Hecht, 1930)	Cyprus: Larnaka: Paralimni	7	ZFMK 76753	HF679604	HF679922	This study
<i>Natrix natrix cypriaca</i> (Hecht, 1930)	Cyprus: Xyliatos Dam	7	ZFMK 54318	-----	HF679923	This study
<i>Natrix natrix cypriaca</i> (Hecht, 1930)	Cyprus: Xyliatos Dam	7	ZFMK 61144	-----	HF679924	This study
<i>Natrix natrix cypriaca</i> (Hecht, 1930)	Cyprus: Xyliatos Dam	7	ZFMK 66524	-----	HF679925	This study
<i>Natrix natrix gotlandica</i> Nilson & Andrén, 1981	Sweden: Gotland	3	ZFMK 36114	HF679605	HF679926	This study
<i>Natrix natrix gotlandica</i> Nilson & Andrén, 1981	Sweden: Gotland	4	ZFMK 38356	HF679606	HF679927	This study
<i>Natrix natrix helvetica</i> (Lacepède, 1789)	Croatia: 25 km N Rijeka: Gomance	4	ZFMK 54705	HF679607	-----	This study
<i>Natrix natrix helvetica</i> (Lacepède, 1789)	Croatia: Istria: Rovinj	4	MTD D 32031	HF679608	HF679928	This study
<i>Natrix natrix helvetica</i> (Lacepède, 1789)	Croatia: Istria: Rovinj	4	MTD D 32032	HF679609	HF679929	This study
<i>Natrix natrix helvetica</i> (Lacepède, 1789)	Croatia: Krk	4	MTD D 20790	HF679610	HF679930	This study
<i>Natrix natrix helvetica</i> (Lacepède, 1789)	Croatia: Krk: N Krk	4	ZFMK 49094	HF679611	-----	This study
<i>Natrix natrix helvetica</i> (Lacepède, 1789)	Croatia: Krk: Punat	4	ZFMK 54706	HF679612	-----	This study
<i>Natrix natrix helvetica</i> (Lacepède, 1789)	France: Anost	E	ZFMK 61095	HF679613	HF679931	This study
<i>Natrix natrix helvetica</i> (Lacepède, 1789)	France: Camargue	E	ZFMK 54712	HF679614	-----	This study
<i>Natrix natrix helvetica</i> (Lacepède, 1789)	France: Charolles	E	ZFMK 64930	HF679615	HF679932	This study
<i>Natrix natrix helvetica</i> (Lacepède, 1789)	France: Monaux (Massif Central)	E	MTD T 10092	HF679616	-----	This study
<i>Natrix natrix helvetica</i> (Lacepède, 1789)	France: N La Londe les Maures	E	MTD D 40712	-----	HF679933	This study
<i>Natrix natrix helvetica</i> (Lacepède, 1789)	France: N Tournon	E	ZFMK 54711	HF679617	HF679934	This study
<i>Natrix natrix helvetica</i> (Lacepède, 1789)	France: St. Amand-Montront	E	-----	KC570252	KC570296	This study
<i>Natrix natrix helvetica</i> (Lacepède, 1789)	France: St. Martin de Crau	E	ZFMK 54710	HF679618	HF679935	This study
<i>Natrix natrix helvetica</i> (Lacepède, 1789)	France: vicinity of Paris	E	-----	AY873736	AY866537	Guicking <i>et al.</i> (2006)
<i>Natrix natrix helvetica</i> (Lacepède, 1789)	Italy: Trentino: Vela	C	MTD T 9656	HF679619	HF679936	This study
<i>Natrix natrix helvetica</i> (Lacepède, 1789)	Italy: Venezia: NW Asiago	C	-----	KC570255	KC570299	This study
<i>Natrix natrix helvetica</i> (Lacepède, 1789)	Slovenia: Ljubljana	4	ZFMK 65382	HF679620	HF679937	This study
<i>Natrix natrix helvetica</i> (Lacepède, 1789)	Switzerland: between Neuchâtel, Bern and Biel: Grosses Moos	E	MTD T 10084	HF679621	-----	This study
<i>Natrix natrix helvetica</i> (Lacepède, 1789)	Switzerland: between Neuchâtel, Bern and Biel: Grosses Moos	E	MTD T 10095	HF679622	-----	This study

■ Table S1 continued ■			Genbank accession numbers			
Taxon	Collecting site	Clade	Voucher	ND4+tRNAs	Cyt <i>b</i>	Reference
<i>Natrix natrix helvetica</i> (Lacepède, 1789)	Switzerland: near Bern	E	MTD T 10083	HF679623	HF679938	This study
<i>Natrix natrix helvetica</i> (Lacepède, 1789)	Switzerland: near Meirigen: Gadmental	E	MTD T 10085	-----	HF679939	This study
<i>Natrix natrix helvetica</i> (Lacepède, 1789)	Switzerland: near Meirigen: Gadmental	E	MTD T 10086	HF679624	-----	This study
<i>Natrix natrix helvetica</i> (Lacepède, 1789)	Switzerland: Astano (Ticino)	C	-----	AY487795	AY487751	Guicking <i>et al.</i> (2006)
<i>Natrix natrix helvetica</i> (Lacepède, 1789)	Switzerland: Vinzel	E	MTD T 10079	HF679625	-----	This study
<i>Natrix natrix helvetica</i> (Lacepède, 1789)	United Kingdom: Kent: Isle of Sheppey	E	LSUMZ 41506	AY873710	AY866544	Guicking <i>et al.</i> (2006)
<i>Natrix natrix helvetica</i> (Lacepède, 1789)	United Kingdom: Norfolk: Norwich: Brandon	E	-----	KC570253	KC570297	This study
<i>Natrix natrix helvetica</i> (Lacepède, 1789)	United Kingdom: North Wales: Gwaith Powder	E	MTD T 9982	HF679626	-----	This study
<i>Natrix natrix helvetica</i> (Lacepède, 1789)	United Kingdom: North Wales: Gwaith Powder	E	MTD T 9983	HF679627	-----	This study
<i>Natrix natrix helvetica</i> x <i>natrix</i>	France: Strasbourg	E	MTD T 10091	HF679628	-----	This study
<i>Natrix natrix helvetica</i> x <i>natrix</i>	Germany: Baden-Württemberg: Böhringer See	3	MTD D 40907	HF679629	-----	This study
<i>Natrix natrix helvetica</i> x <i>natrix</i>	Germany: Baden-Württemberg: Lake Constance: Radolfzell	3	-----	AY487792	AY487727	Guicking <i>et al.</i> (2006)
<i>Natrix natrix helvetica</i> x <i>natrix</i>	Germany: Hesse: Herborn	E	ZFMK 89403	HF679630	HF679940	This study
<i>Natrix natrix helvetica</i> x <i>natrix</i>	Germany: Hesse: Hofheim/Lorsbuch	E	MTD D 35776	HF679631	HF679941	This study
<i>Natrix natrix helvetica</i> x <i>natrix</i>	Germany: Hesse: Kelkheim/Taunus	E	-----	AY873711	AY866538	Guicking <i>et al.</i> (2006)
<i>Natrix natrix helvetica</i> x <i>natrix</i>	Germany: North Rhine-Westphalia: Bad Honnef	E	ZFMK 68431	HF679632	-----	This study
<i>Natrix natrix helvetica</i> x <i>natrix</i>	Germany: North Rhine-Westphalia: Bad Honnef	E	ZFMK 68432	HF679633	HF679942	This study
<i>Natrix natrix helvetica</i> x <i>natrix</i>	Germany: North Rhine-Westphalia: Bad Münstereifel	E	ZFMK 92193	HF679634	HF679943	This study
<i>Natrix natrix helvetica</i> x <i>natrix</i>	Germany: North Rhine-Westphalia: between Bergisch-Gladbach and Herrenstrunden	E	ZFMK 75088	HF679635	-----	This study
<i>Natrix natrix helvetica</i> x <i>natrix</i>	Germany: North Rhine-Westphalia: between Hürtgenwald and Gey	E	ZFMK 70420	HF679636	HF679944	This study
<i>Natrix natrix helvetica</i> x <i>natrix</i>	Germany: North Rhine-Westphalia: Bonn	E	ZFMK 68433	HF679637	HF679945	This study
<i>Natrix natrix helvetica</i> x <i>natrix</i>	Germany: North Rhine-Westphalia: Bonn	E	ZFMK 92228	HF679638	-----	This study
<i>Natrix natrix helvetica</i> x <i>natrix</i>	Germany: North Rhine-Westphalia: Bonn	E	ZFMK 92536	HF679639	HF679946	This study
<i>Natrix natrix helvetica</i> x <i>natrix</i>	Germany: North Rhine-Westphalia: Bonn	E	ZFMK 92537	HF679640	HF679947	This study
<i>Natrix natrix helvetica</i> x <i>natrix</i>	Germany: North Rhine-Westphalia: Bonn (Kottenforst)	E	ZFMK 89393	HF679641	HF679948	This study
<i>Natrix natrix helvetica</i> x <i>natrix</i>	Germany: North Rhine-Westphalia: Drove	E	ZFMK 86786	HF679642	-----	This study
<i>Natrix natrix helvetica</i> x <i>natrix</i>	Germany: North Rhine-Westphalia: Königswinter, Ittenbach	E	ZFMK 82773	HF679643	HF679949	This study
<i>Natrix natrix helvetica</i> x <i>natrix</i>	Germany: North Rhine-Westphalia: Nideggen/Eifel	E	ZFMK 83771	HF679644	HF679950	This study
<i>Natrix natrix helvetica</i> x <i>natrix</i>	Germany: North Rhine-Westphalia: Sankt Augustin-Hangelar	E	ZFMK 89086	HF679645	HF679951	This study
<i>Natrix natrix helvetica</i> x <i>natrix</i>	Germany: North Rhine-Westphalia: Wuppertal: Morsbachtal	E	ZFMK 73645	HF679646	HF679952	This study
<i>Natrix natrix helvetica</i> x <i>natrix</i>	Germany: North Rhine-Westphalia: Wuppertal: Vorwerk	E	ZFMK 73646	HF679647	HF679953	This study
<i>Natrix natrix helvetica</i> x <i>natrix</i>	Germany: Rhineland-Palatinate: Horhausen	E	ZFMK 80876	HF679648	HF679954	This study
<i>Natrix natrix helvetica</i> x <i>natrix</i>	Germany: Rhineland-Palatinate: Lieser	E	MTD D 35933	HF679649	HF679955	This study

■ Table S1 continued ■			Genbank accession numbers			
Taxon	Collecting site	Clade	Voucher	ND4+tRNAs	Cyt <i>b</i>	Reference
<i>Natrix natrix helvetica</i> x <i>natrix</i>	Germany: Rhineland-Palatinate: Maria Laach	E	ZFMK 83703	HF679650	HF679956	This study
<i>Natrix natrix helvetica</i> x <i>natrix</i>	Germany: Rhineland-Palatinate: Weltersburg	E	ZFMK 80875	HF679651	-----	This study
<i>Natrix natrix helvetica</i> x <i>natrix</i>	Germany: Saarland: Hirschberg/Neunkirchen	E	ZFMK 54321	-----	HF679957	This study
<i>Natrix natrix helvetica</i> x <i>natrix</i>	Switzerland: Lake Constance: near Thal	3	MTD T 10088	HF679652	-----	This study
<i>Natrix natrix helvetica</i> x <i>natrix</i>	Switzerland: St. Gallen: Altenrhein	3	MTD D 30567	HF679653	HF679958	This study
<i>Natrix natrix lanzai</i> Kramer, 1970	Italy: Apulia: Torre San Gennaro (Brindisi)	D	-----	AY873715	AY487733	Guicking <i>et al.</i> (2006)
<i>Natrix natrix lanzai</i> Kramer, 1970	Italy: Lazio: Monti della Tolfa	F	MZUF 31620	HF679654	HF679959	This study
<i>Natrix natrix lanzai</i> Kramer, 1970	Italy: Tuscany: Chiaveretto	F	ZFMK 64931	HF679655	HF679960	This study
<i>Natrix natrix lanzai</i> Kramer, 1970	Italy: Tuscany: E Campagrina	F	-----	KC570254	KC570298	This study
<i>Natrix natrix lanzai</i> Kramer, 1970	Italy: Tuscany: Florence	F	MZUF 39870	HF679656	HF679961	This study
<i>Natrix natrix lanzai</i> Kramer, 1970	Italy: Tuscany: Florence: Scandicci	F	MZUF 38124	-----	HF679962	This study
<i>Natrix natrix lanzai</i> Kramer, 1970	Italy: Tuscany: Florence: Vaglia	F	MZUF 40267	HE584631	HE584632	Fritz <i>et al.</i> (2012)
<i>Natrix natrix lanzai</i> Kramer, 1970	Italy: Tuscany: Livorno	F	MTD T 9981	HF679657	HF679963	This study
<i>Natrix natrix lanzai</i> Kramer, 1970	Italy: Tuscany: Pisa	F	MTD D 33721	HF679658	HF679964	This study
<i>Natrix natrix lanzai</i> Kramer, 1970	Italy: Tuscany: Siena: Gaiole	F	MZUF 40189	HF679659	HF679965	This study
<i>Natrix natrix lanzai</i> Kramer, 1970	Italy: Tuscany: Uccellina	F	MZUF 7388	HF679660	HF679966	This study
<i>Natrix natrix natrix</i> (Linnaeus, 1758)	Austria: Burgenland: Andau	4	ZFMK 65105	HF679661	HF679967	This study
<i>Natrix natrix natrix</i> (Linnaeus, 1758)	Austria: Burgenland: Apetlon	4	ZFMK 68656	HF679662	HF679968	This study
<i>Natrix natrix natrix</i> (Linnaeus, 1758)	Austria: Burgenland: Breitenbrunn	4	ZFMK 55995	HF679663	HF679969	This study
<i>Natrix natrix natrix</i> (Linnaeus, 1758)	Austria: Burgenland: Hölle	4	ZFMK 51746	-----	HF679970	This study
<i>Natrix natrix natrix</i> (Linnaeus, 1758)	Austria: Burgenland: Illmitz	4	ZFMK 74926	HF679664	HF679971	This study
<i>Natrix natrix natrix</i> (Linnaeus, 1758)	Austria: Burgenland: Illmitz	4	ZFMK 83775	-----	HF679972	This study
<i>Natrix natrix natrix</i> (Linnaeus, 1758)	Austria: Burgenland: Jois	4	ZFMK 65687	HF679665	HF679973	This study
<i>Natrix natrix natrix</i> (Linnaeus, 1758)	Austria: Burgenland: Weiden am See	4	ZFMK 51670	HF679666	HF679974	This study
<i>Natrix natrix natrix</i> (Linnaeus, 1758)	Austria: Burgenland: Zitzmannsdorfer Wiesen	4	ZFMK 91242	HF679667	HF679975	This study
<i>Natrix natrix natrix</i> (Linnaeus, 1758)	Austria: Lower Austria: Bergern	4	MTD T 9912	HF679668	HF679976	This study
<i>Natrix natrix natrix</i> (Linnaeus, 1758)	Austria: Lower Austria: Losenheim	4	ZFMK 83922	HF679669	HF679977	This study
<i>Natrix natrix natrix</i> (Linnaeus, 1758)	Austria: Styria: Admont/Gesäuse	3	ZFMK 73648	-----	HF679978	This study
<i>Natrix natrix natrix</i> (Linnaeus, 1758)	Austria: Vienna: Donauinsel	4	MTD T 9903	HF679670	HF679979	This study
<i>Natrix natrix natrix</i> (Linnaeus, 1758)	Austria: Vienna: Donauinsel	4	MTD T 9904	HF679671	HF679980	This study
<i>Natrix natrix natrix</i> (Linnaeus, 1758)	Austria: Vienna: Donauinsel	4	MTD T 9905	HF679672	HF679981	This study
<i>Natrix natrix natrix</i> (Linnaeus, 1758)	Czech Republic: Bartošovice	4	MTD T 9888	HF679673	-----	This study
<i>Natrix natrix natrix</i> (Linnaeus, 1758)	Czech Republic: Běstvina	4	MTD T 9878	HF679674	-----	This study

■ Table S1 continued ■			Genbank accession numbers			
Taxon	Collecting site	Clade	Voucher	ND4+tRNAs	Cyt <i>b</i>	Reference
<i>Natrix natrix natrix</i> (Linnaeus, 1758)	Czech Republic: between Horušice and Ruda	4	MTD T 9579	HF679675	HF679982	This study
<i>Natrix natrix natrix</i> (Linnaeus, 1758)	Czech Republic: between Horušice and Ruda	4	MTD T 9580	HF679676	HF679983	This study
<i>Natrix natrix natrix</i> (Linnaeus, 1758)	Czech Republic: České Budějovice	4	MTD T 8963	HF679677	HF679984	This study
<i>Natrix natrix natrix</i> (Linnaeus, 1758)	Czech Republic: Chřiby Mountains: Halenkovice	4	MTD T 9886	HF679678	HF679985	This study
<i>Natrix natrix natrix</i> (Linnaeus, 1758)	Czech Republic: Chřiby Mountains: Jankovice	4	MTD T 9880	HF679679	-----	This study
<i>Natrix natrix natrix</i> (Linnaeus, 1758)	Czech Republic: Chřiby Mountains: Jankovice	4	MTD T 9885	-----	HF679986	This study
<i>Natrix natrix natrix</i> (Linnaeus, 1758)	Czech Republic: Chřiby Mountains: Kudlovice	4	MTD T 9882	HF679680	-----	This study
<i>Natrix natrix natrix</i> (Linnaeus, 1758)	Czech Republic: Chřiby Mountains: Kudlovická dolina	4	MTD T 8974	HF679681	HF679987	This study
<i>Natrix natrix natrix</i> (Linnaeus, 1758)	Czech Republic: Chřiby Mountains: Salaš	4	MTD T 9879	HF679682	-----	This study
<i>Natrix natrix natrix</i> (Linnaeus, 1758)	Czech Republic: Dolní Lištná	4	MTD T 8636	HF679683	-----	This study
<i>Natrix natrix natrix</i> (Linnaeus, 1758)	Czech Republic: Dolní Lištná	4	MTD T 8642	HF679684	HF679988	This study
<i>Natrix natrix natrix</i> (Linnaeus, 1758)	Czech Republic: Heřmanovice	4	MTD T 8962	HF679685	HF679989	This study
<i>Natrix natrix natrix</i> (Linnaeus, 1758)	Czech Republic: Heřmanovice	4	MTD T 8964	HF679686	HF679990	This study
<i>Natrix natrix natrix</i> (Linnaeus, 1758)	Czech Republic: Kamýk: Litoměřice	4	MTD T 8972	HF679687	HF679991	This study
<i>Natrix natrix natrix</i> (Linnaeus, 1758)	Czech Republic: Karviná: Olšiny	4	MTD T 8634	HF679688	HF679992	This study
<i>Natrix natrix natrix</i> (Linnaeus, 1758)	Czech Republic: Kokořín	4	MTD T 8966	HF679689	HF679993	This study
<i>Natrix natrix natrix</i> (Linnaeus, 1758)	Czech Republic: Kokořínský Důl	4	MTD T 8965	HF679690	HF679994	This study
<i>Natrix natrix natrix</i> (Linnaeus, 1758)	Czech Republic: Kundratice: Litoměřice	4	MTD T 8971	HF679691	HF679995	This study
<i>Natrix natrix natrix</i> (Linnaeus, 1758)	Czech Republic: Moravský Písek	4	MTD T 9881	HF679692	-----	This study
<i>Natrix natrix natrix</i> (Linnaeus, 1758)	Czech Republic: Staré Hamry	4	MTD T 8643	HF679693	HF679996	This study
<i>Natrix natrix natrix</i> (Linnaeus, 1758)	Czech Republic: Vysoká: Jihlava	4	MTD T 8969	HF679694	HF679997	This study
<i>Natrix natrix natrix</i> (Linnaeus, 1758)	Czech Republic: Vysoká: Jihlava	4	MTD T 8970	HF679695	HF679998	This study
<i>Natrix natrix natrix</i> (Linnaeus, 1758)	Czech Republic: Zlaté Hory	4	MTD T 8961	HF679696	HF679999	This study
<i>Natrix natrix natrix</i> (Linnaeus, 1758)	Denmark: Funen: NNW Svendborg	3	MTD T 9652	HF679697	HF680000	This study
<i>Natrix natrix natrix</i> (Linnaeus, 1758)	Denmark: Funen: NNW Svendborg	3	MTD T 9653	HF679698	HF680001	This study
<i>Natrix natrix natrix</i> (Linnaeus, 1758)	Denmark: Funen: NNW Svendborg	3	MTD T 9654	HF679699	HF680002	This study
<i>Natrix natrix natrix</i> (Linnaeus, 1758)	Denmark: Funen: NNW Svendborg	3	MTD T 9655	HF679700	HF680003	This study
<i>Natrix natrix natrix</i> (Linnaeus, 1758)	Denmark: Jutland	3	-----	AY873712	AY866539	Guicking <i>et al.</i> (2006)
<i>Natrix natrix natrix</i> (Linnaeus, 1758)	Denmark: Jutland: SE Gammel Rye	3	MTD T 9913	HF679701	HF680004	This study
<i>Natrix natrix natrix</i> (Linnaeus, 1758)	Denmark: Jutland: SE Gammel Rye	3	MTD T 9914	HF679702	HF680005	This study
<i>Natrix natrix natrix</i> (Linnaeus, 1758)	Denmark: Jutland: SE Gammel Rye	3	MTD T 9915	HF679703	HF680006	This study
<i>Natrix natrix natrix</i> (Linnaeus, 1758)	Denmark: Jutland: SE Skanderborg	3	MTD T 9916	HF679704	HF680007	This study
<i>Natrix natrix natrix</i> (Linnaeus, 1758)	Denmark: Langeland: S Tranekær	3	MTD T 9651	HF679705	HF680008	This study

■ Table S1 continued ■			Genbank accession numbers			
Taxon	Collecting site	Clade	Voucher	ND4+tRNAs	Cyt <i>b</i>	Reference
<i>Natrix natrix natrix</i> (Linnaeus, 1758)	Denmark: Zealand: N Præstø: Feddet	3	MTD T 9649	HF679706	HF680009	This study
<i>Natrix natrix natrix</i> (Linnaeus, 1758)	Denmark: Zealand: S Borup	3	MTD T 9269	HF679707	HF680010	This study
<i>Natrix natrix natrix</i> (Linnaeus, 1758)	Denmark: Zealand: S Borup	3	MTD T 9270	HF679708	HF680011	This study
<i>Natrix natrix natrix</i> (Linnaeus, 1758)	Denmark: Zealand: S Borup	3	MTD T 9271	HF679709	-----	This study
<i>Natrix natrix natrix</i> (Linnaeus, 1758)	Denmark: Zealand: W Køge	3	MTD T 9648	HF679710	HF680012	This study
<i>Natrix natrix natrix</i> (Linnaeus, 1758)	Germany: Baden-Württemberg: between Leonberg and Gerlingen	3	ZFMK 78777	-----	HF680013	This study
<i>Natrix natrix natrix</i> (Linnaeus, 1758)	Germany: Baden-Württemberg: Oberweissach	3	MTD D 39068	HF679711	HF680014	This study
<i>Natrix natrix natrix</i> (Linnaeus, 1758)	Germany: Bavaria: Mammendorf	4	ZFMK 71166	HF679712	HF680015	This study
<i>Natrix natrix natrix</i> (Linnaeus, 1758)	Germany: Bavaria: Passau	4	ZFMK 56016	HF679713	HF680016	This study
<i>Natrix natrix natrix</i> (Linnaeus, 1758)	Germany: Brandenburg: Brieske	3	MTD D 47570	HF679714	-----	This study
<i>Natrix natrix natrix</i> (Linnaeus, 1758)	Germany: Brandenburg: Cumlosen	4	MTD D 29503	HF679715	HF680017	This study
<i>Natrix natrix natrix</i> (Linnaeus, 1758)	Germany: Brandenburg: Guteborn	3	MTD D 47197	HF679716	HF680018	This study
<i>Natrix natrix natrix</i> (Linnaeus, 1758)	Germany: Brandenburg: Guteborn	3	MTD T 3813	-----	HF680019	This study
<i>Natrix natrix natrix</i> (Linnaeus, 1758)	Germany: Brandenburg: Hosena	3	MTD D 45304	HF679717	HF680020	This study
<i>Natrix natrix natrix</i> (Linnaeus, 1758)	Germany: Brandenburg: Perleberg	3	MTD D 29504	HF679718	HF680021	This study
<i>Natrix natrix natrix</i> (Linnaeus, 1758)	Germany: Brandenburg: Senftenberg	3	ZFMK 76358	HF679719	HF680022	This study
<i>Natrix natrix natrix</i> (Linnaeus, 1758)	Germany: Hesse: Flieden	3	ZFMK 82929	HF679720	HF680023	This study
<i>Natrix natrix natrix</i> (Linnaeus, 1758)	Germany: Hesse: Steinau	4	ZFMK 82930	HF679721	HF680024	This study
<i>Natrix natrix natrix</i> (Linnaeus, 1758)	Germany: Lower Saxony: Lachendorf	3	ZFMK 86134	HF679722	HF680025	This study
<i>Natrix natrix natrix</i> (Linnaeus, 1758)	Germany: Lower Saxony: Leiferde	3	ZFMK 89088	HF679723	HF680026	This study
<i>Natrix natrix natrix</i> (Linnaeus, 1758)	Germany: Mecklenburg-Western Pomerania: Güstrow	3	ZFMK 61035	-----	HF680027	This study
<i>Natrix natrix natrix</i> (Linnaeus, 1758)	Germany: Mecklenburg-Western Pomerania: Neukloster	3	ZFMK 47435	HF679724	-----	This study
<i>Natrix natrix natrix</i> (Linnaeus, 1758)	Germany: Saxony: Bad Düben	3	MTD D 39712	HF679725	HF680028	This study
<i>Natrix natrix natrix</i> (Linnaeus, 1758)	Germany: Saxony: Bad Gottleuba	4	MTD D 39331	HF679726	HF680029	This study
<i>Natrix natrix natrix</i> (Linnaeus, 1758)	Germany: Saxony: Bärnsdorf	4	MTD D 47231	HF679727	HF680030	This study
<i>Natrix natrix natrix</i> (Linnaeus, 1758)	Germany: Saxony: Biehla	3	MTD T 3183	HF679728	HF680031	This study
<i>Natrix natrix natrix</i> (Linnaeus, 1758)	Germany: Saxony: Borna	4	MTD D 31066	HF679729	HF680032	This study
<i>Natrix natrix natrix</i> (Linnaeus, 1758)	Germany: Saxony: Chemnitz	3	MTD D 47317	HF679730	HF680033	This study
<i>Natrix natrix natrix</i> (Linnaeus, 1758)	Germany: Saxony: Chemnitz	3	MTD D 47318	-----	HF680034	This study
<i>Natrix natrix natrix</i> (Linnaeus, 1758)	Germany: Saxony: Cunnernsdorf-Biehla	3	MWLK 626/05	HF679731	HF680035	This study
<i>Natrix natrix natrix</i> (Linnaeus, 1758)	Germany: Saxony: Dahlen	3	MTD D 46238	HF679732	HF680036	This study
<i>Natrix natrix natrix</i> (Linnaeus, 1758)	Germany: Saxony: Dorfhain	4	MTD D 47638	HF679733	HF680037	This study
<i>Natrix natrix natrix</i> (Linnaeus, 1758)	Germany: Saxony: Dresden	3	MTD D 45527	-----	HF680038	This study



■ Table S1 continued ■			Genbank accession numbers			
Taxon	Collecting site	Clade	Voucher	ND4+tRNAs	Cyt <i>b</i>	Reference
<i>Natrix natrix natrix</i> (Linnaeus, 1758)	Germany: Saxony: Dresden	4	MTD D 47639	HF679734	HF680039	This study
<i>Natrix natrix natrix</i> (Linnaeus, 1758)	Germany: Saxony: Dresden	3	MTD D 47728	HF679735	-----	This study
<i>Natrix natrix natrix</i> (Linnaeus, 1758)	Germany: Saxony: Dubringer Moor	3	MWLK 51/04	HF679736	HF680040	This study
<i>Natrix natrix natrix</i> (Linnaeus, 1758)	Germany: Saxony: Großdittmannsdorf	4	MTD D 38701	-----	HF680041	This study
<i>Natrix natrix natrix</i> (Linnaeus, 1758)	Germany: Saxony: Großdittmannsdorf	4	MWLK 370/04	HF679737	HF680042	This study
<i>Natrix natrix natrix</i> (Linnaeus, 1758)	Germany: Saxony: Gutttau	3	MWLK 776/05	HF679738	HF680043	This study
<i>Natrix natrix natrix</i> (Linnaeus, 1758)	Germany: Saxony: Hartmannsgrün	3	MTD D 47002	-----	HF680044	This study
<i>Natrix natrix natrix</i> (Linnaeus, 1758)	Germany: Saxony: Kamenz	4	MWLK 466/05	HF679739	-----	This study
<i>Natrix natrix natrix</i> (Linnaeus, 1758)	Germany: Saxony: Kamenz	3	MWLK 988/05	HF679740	HF680045	This study
<i>Natrix natrix natrix</i> (Linnaeus, 1758)	Germany: Saxony: Kreischa-Lockmittel	4	MTD D 40611	HF679741	HF680046	This study
<i>Natrix natrix natrix</i> (Linnaeus, 1758)	Germany: Saxony: Langebrück	4	MTD D 48178	HF679742	HF680047	This study
<i>Natrix natrix natrix</i> (Linnaeus, 1758)	Germany: Saxony: Lauterbach	3	MTD D 45996	-----	HF680048	This study
<i>Natrix natrix natrix</i> (Linnaeus, 1758)	Germany: Saxony: Lengefeld/Neunzehnhain	4	MTD T 9528	HF679743	HF680049	This study
<i>Natrix natrix natrix</i> (Linnaeus, 1758)	Germany: Saxony: Linz	4	MWLK 76/01	HF679744	HF680050	This study
<i>Natrix natrix natrix</i> (Linnaeus, 1758)	Germany: Saxony: Michalken	3	MWLK 371/01	HF679745	HF680051	This study
<i>Natrix natrix natrix</i> (Linnaeus, 1758)	Germany: Saxony: Michalken	3	MWLK 372/01	HF679746	HF680052	This study
<i>Natrix natrix natrix</i> (Linnaeus, 1758)	Germany: Saxony: Milkel	3	MTD D 45006	HF679747	HF680053	This study
<i>Natrix natrix natrix</i> (Linnaeus, 1758)	Germany: Saxony: Neukirch	3	MWLK 311/05	HF679748	HF680054	This study
<i>Natrix natrix natrix</i> (Linnaeus, 1758)	Germany: Saxony: Oberschöna	4	MTD D 47429	HF679749	HF680055	This study
<i>Natrix natrix natrix</i> (Linnaeus, 1758)	Germany: Saxony: Oppach	3	MTD D 32501	HF679750	HF680056	This study
<i>Natrix natrix natrix</i> (Linnaeus, 1758)	Germany: Saxony: Ottendorf-Okrilla	3	MTD D 42679	HF679751	HF680057	This study
<i>Natrix natrix natrix</i> (Linnaeus, 1758)	Germany: Saxony: Rehnsdorf	3	MWLK 284/99	HF679752	HF680058	This study
<i>Natrix natrix natrix</i> (Linnaeus, 1758)	Germany: Saxony: Schwepnitz	3	MWLK 53/04	HF679753	HF680059	This study
<i>Natrix natrix natrix</i> (Linnaeus, 1758)	Germany: Saxony: Teicha	3	MWLK 795/05	-----	HF680060	This study
<i>Natrix natrix natrix</i> (Linnaeus, 1758)	Germany: Saxony: Waldenburg	3	MTD D 42680	HF679754	HF680061	This study
<i>Natrix natrix natrix</i> (Linnaeus, 1758)	Germany: Saxony: Weixdorf	4	MTD D 47258	HF679755	HF680062	This study
<i>Natrix natrix natrix</i> (Linnaeus, 1758)	Germany: Saxony: Wittichenau	3	MWLK 144/01	HF679756	HF680063	This study
<i>Natrix natrix natrix</i> (Linnaeus, 1758)	Germany: Saxony-Anhalt: Altenbrak	3	MTD D 41418	HF679757	HF680064	This study
<i>Natrix natrix natrix</i> (Linnaeus, 1758)	Germany: Saxony-Anhalt: Sangerhausen	3	ZFMK 89087	HF679758	HF680065	This study
<i>Natrix natrix natrix</i> (Linnaeus, 1758)	Germany: Schleswig-Holstein: Kiel: Landwehr	3	ZFMK 62405	HF679759	HF680066	This study
<i>Natrix natrix natrix</i> (Linnaeus, 1758)	Germany: Schleswig-Holstein: Kiel-Elmschenhagen	3	ZFMK 85184	HF679760	HF680067	This study
<i>Natrix natrix natrix</i> (Linnaeus, 1758)	Germany: Schleswig-Holstein: Probstei: Hagener Moor	3	ZFMK 92535	HF679761	HF680068	This study
<i>Natrix natrix natrix</i> (Linnaeus, 1758)	Germany: Schleswig-Holstein: Probsteierhagen	3	ZFMK 73639	HF679762	HF680069	This study

■ Table S1 continued ■			Genbank accession numbers			
Taxon	Collecting site	Clade	Voucher	ND4+tRNAs	Cyt <i>b</i>	Reference
<i>Natrix natrix natrix</i> (Linnaeus, 1758)	Hungary: Balatonszepezd	4	ZFMK 58024	HF679763	-----	This study
<i>Natrix natrix natrix</i> (Linnaeus, 1758)	Hungary: between Sarród and Fertőujlak	4	ZFMK 88062	HF679764	HF680070	This study
<i>Natrix natrix natrix</i> (Linnaeus, 1758)	Hungary: Győr	4	ZFMK 61029	HF679765	HF680071	This study
<i>Natrix natrix natrix</i> (Linnaeus, 1758)	Hungary: Hansági-főcsatorna	4	ZFMK 91241	HF679766	HF680072	This study
<i>Natrix natrix natrix</i> (Linnaeus, 1758)	Hungary: Hortobágy	4	MTD T 9906	HF679767	HF680073	This study
<i>Natrix natrix natrix</i> (Linnaeus, 1758)	Hungary: Kunpeszér	4	MTD T 7571	HF679768	HF680074	This study
<i>Natrix natrix natrix</i> (Linnaeus, 1758)	Hungary: Kunpeszér	4	MTD T 7574	HF679769	HF680075	This study
<i>Natrix natrix natrix</i> (Linnaeus, 1758)	Hungary: S Budapest	4	ZFMK 85905	HF679770	HF680076	This study
<i>Natrix natrix natrix</i> (Linnaeus, 1758)	Hungary: Tihany	4	ZFMK 74927	HF679771	HF680077	This study
<i>Natrix natrix natrix</i> (Linnaeus, 1758)	Lithuania: Marcinkonys	8	MTD T 8967	HF679772	HF680078	This study
<i>Natrix natrix natrix</i> (Linnaeus, 1758)	Lithuania: Trasininkas	8	MTD T 8968	HF679773	HF680079	This study
<i>Natrix natrix natrix</i> (Linnaeus, 1758)	Norway: Akershus: Son	3	ZMUO 54-96	HF679774	HF680080	This study
<i>Natrix natrix natrix</i> (Linnaeus, 1758)	Norway: Oslo: Grønmo: Sølvdøbla	3	ZMUO 31-83	HF679775	HF680081	This study
<i>Natrix natrix natrix</i> (Linnaeus, 1758)	Norway: Oslo: Maridalen: Skjervensaga	3	ZMUO 26-85	HF679776	HF680082	This study
<i>Natrix natrix natrix</i> (Linnaeus, 1758)	Norway: Telemark: Levangshalvøya	3	ZMUO 1H 10-2000	HF679777	HF680083	This study
<i>Natrix natrix natrix</i> (Linnaeus, 1758)	Poland: Mazovia: Kampinos National Park	4	MTD T 9965	HF679778	-----	This study
<i>Natrix natrix natrix</i> (Linnaeus, 1758)	Poland: Mazovia: Kampinos National Park	4	MTD T 9966	HF679779	-----	This study
<i>Natrix natrix natrix</i> (Linnaeus, 1758)	Poland: Mazovia: Kampinos National Park	4	MTD T 9968	HF679780	HF680084	This study
<i>Natrix natrix natrix</i> (Linnaeus, 1758)	Poland: Mazovia: Kampinos National Park	4	MTD T 9969	HF679781	HF680085	This study
<i>Natrix natrix natrix</i> (Linnaeus, 1758)	Poland: Mazovia: Kampinos National Park	4	MTD T 9972	HF679782	HF680086	This study
<i>Natrix natrix natrix</i> (Linnaeus, 1758)	Poland: Mazovia: Kampinos National Park	4	MTD T 9974	HF679783	-----	This study
<i>Natrix natrix natrix</i> (Linnaeus, 1758)	Poland: Mazovia: Kampinos National Park	4	MTD T 10318	HF679784	HF680087	This study
<i>Natrix natrix natrix</i> (Linnaeus, 1758)	Poland: Podlachia: Białowieża National Park	8	MTD T 9975	HF679785	-----	This study
<i>Natrix natrix natrix</i> (Linnaeus, 1758)	Poland: Podlachia: Białowieża National Park	8	MTD T 9976	HF679786	HF680088	This study
<i>Natrix natrix natrix</i> (Linnaeus, 1758)	Poland: Podlachia: Białowieża National Park	8	MTD T 9977	HF679787	HF680089	This study
<i>Natrix natrix natrix</i> (Linnaeus, 1758)	Poland: Podlachia: Białowieża National Park	8	MTD T 10314	-----	HF680090	This study
<i>Natrix natrix natrix</i> (Linnaeus, 1758)	Poland: Podlachia: Białowieża National Park	8	MTD T 10315	HF679788	HF680091	This study
<i>Natrix natrix natrix</i> (Linnaeus, 1758)	Poland: Podlachia: Białowieża National Park	8	MTD T 10316	HF679789	HF680092	This study
<i>Natrix natrix natrix</i> (Linnaeus, 1758)	Poland: Upper Silesia: Golezowice	4	MTD T 9637	HF679790	HF680093	This study
<i>Natrix natrix natrix</i> (Linnaeus, 1758)	Poland: Upper Silesia: Kotórz Wielki	4	MTD T 10025	HF679791	HF680094	This study
<i>Natrix natrix natrix</i> (Linnaeus, 1758)	Poland: Upper Silesia: Kotórz Wielki	3	MTD T 10026	HF679792	-----	This study
<i>Natrix natrix natrix</i> (Linnaeus, 1758)	Poland: Upper Silesia: Krośnica	4	MTD T 9635	HF679793	HF680095	This study
<i>Natrix natrix natrix</i> (Linnaeus, 1758)	Poland: Upper Silesia: Ligota Tułowicka	4	MTD T 9638	HF679794	HF680096	This study

■ Table S1 continued ■			Genbank accession numbers			
Taxon	Collecting site	Clade	Voucher	ND4+tRNAs	Cyt <i>b</i>	Reference
<i>Natrix natrix natrix</i> (Linnaeus, 1758)	Poland: Upper Silesia: SE Opole	4	MTD T 9636	HF679795	HF680097	This study
<i>Natrix natrix natrix</i> (Linnaeus, 1758)	Russia: Kaliningrad Oblast: Rybachy	8	-----	AY487793	AY487741	Guicking <i>et al.</i> (2006)
<i>Natrix natrix natrix</i> (Linnaeus, 1758)	Slovakia: between Topoľa and Runina	4	MTD T 8975	HF679797	-----	This study
<i>Natrix natrix natrix</i> (Linnaeus, 1758)	Slovakia: Bujakovo	4	MTD T 9017	HF679798	HF680099	This study
<i>Natrix natrix natrix</i> (Linnaeus, 1758)	Slovakia: Červený Kláštor	4	MTD T 8648	HF679799	HF680100	This study
<i>Natrix natrix natrix</i> (Linnaeus, 1758)	Slovakia: Devín	4	MTD T 9014	HF679800	HF680101	This study
<i>Natrix natrix natrix</i> (Linnaeus, 1758)	Slovakia: Janova Lehota	4	MTD T 8641	HF679801	HF680102	This study
<i>Natrix natrix natrix</i> (Linnaeus, 1758)	Slovakia: Jurský Šúr	4	MTD T 9011	HF679802	HF680103	This study
<i>Natrix natrix natrix</i> (Linnaeus, 1758)	Slovakia: Kamenica nad Hronom	4	MTD T 8635	HF679803	-----	This study
<i>Natrix natrix natrix</i> (Linnaeus, 1758)	Slovakia: Kraľovany: Kraľovanská dolina	3	MTD T 8632	HF679804	HF680104	This study
<i>Natrix natrix natrix</i> (Linnaeus, 1758)	Slovakia: Muránska Lehota	4	MTD T 9019	HF679805	HF680105	This study
<i>Natrix natrix natrix</i> (Linnaeus, 1758)	Slovakia: Regetovka	4	MTD T 9018	HF679806	HF680106	This study
<i>Natrix natrix natrix</i> (Linnaeus, 1758)	Slovakia: Rusovce	4	MTD T 9016	HF679807	HF680107	This study
<i>Natrix natrix natrix</i> (Linnaeus, 1758)	Slovakia: Silica: Farárova jama	4	MTD T 9009	HF679808	-----	This study
<i>Natrix natrix natrix</i> (Linnaeus, 1758)	Slovakia: Strážne	4	MTD T 8637	HF679809	HF680108	This study
<i>Natrix natrix natrix</i> (Linnaeus, 1758)	Slovakia: Stupava	4	MTD T 9020	HF679810	HF680109	This study
<i>Natrix natrix natrix</i> (Linnaeus, 1758)	Slovakia: Svetlice	4	MTD T 8638	HF679811	-----	This study
<i>Natrix natrix natrix</i> (Linnaeus, 1758)	Slovakia: Tatra Mountains: Žiar	3	MTD T 9015	HF679812	HF680110	This study
<i>Natrix natrix natrix</i> (Linnaeus, 1758)	Slovakia: Ulič	4	MTD T 9022	HF679813	HF680111	This study
<i>Natrix natrix natrix</i> (Linnaeus, 1758)	Slovakia: Weitov lom	4	MTD T 9010	HF679814	HF680112	This study
<i>Natrix natrix natrix</i> (Linnaeus, 1758)	Sweden: Småland: Högsby	3	-----	AY487799	AY487755	Guicking <i>et al.</i> (2006)
<i>Natrix natrix natrix</i> (Linnaeus, 1758)	Ukraine: Crimea: Luchyste	8	MTD D 42725	HF679815	HF680113	This study
<i>Natrix natrix natrix</i> (Linnaeus, 1758)	Ukraine: Oblast Herson: Hola Prystan': Herois'ke	8	MTD D 42724	HF679816	HF680114	This study
<i>Natrix natrix natrix x persa</i>	Croatia: NE Lupoglav	4	ZFMK 91558	HF679817	HF680115	This study
<i>Natrix natrix natrix x persa</i>	Hungary: Barcs	4	ZFMK 65686	HF679818	HF680116	This study
<i>Natrix natrix natrix x persa</i>	Hungary: Pécsi-tó	4	-----	AY487796	AY487752	Guicking (2004)
<i>Natrix natrix natrix x persa</i>	Hungary: Somogyszob	4	ZFMK 82795	-----	HF680117	This study
<i>Natrix natrix natrix x persa</i>	Hungary: Villány	4	MTD T 7594	HF679819	HF680118	This study
<i>Natrix natrix natrix x persa</i>	Romania: Cerna Sat	4	MTD T 8640	HF679820	-----	This study
<i>Natrix natrix natrix x persa</i>	Romania: Cluj-Napoca	4	-----	AY873719	AY866541	Guicking <i>et al.</i> (2006)
<i>Natrix natrix natrix x persa</i>	Romania: Geoagiu de Sus	4	MTD T 8650	HF679796	HF680098	This study
<i>Natrix natrix natrix x persa</i>	Romania: Tulcea Region	4	-----	AY873718	AY866540	Guicking <i>et al.</i> (2006)
<i>Natrix natrix natrix x persa</i>	Slovenia: Zalec	4	-----	AY873720	AY487738	Guicking <i>et al.</i> (2006)

■ Table S1 continued ■			Genbank accession numbers			
Taxon	Collecting site	Clade	Voucher	ND4+tRNAs	Cyt <i>b</i>	Reference
<i>Natrix natrix persa</i> (Pallas, 1814)	Armenia: Ankavan	8	ROM 26842	AY873723	AY866543	Guicking <i>et al.</i> (2006)
<i>Natrix natrix persa</i> (Pallas, 1814)	Azerbaijan: Calilabad	1	MTD T 8955	-----	HF680119	This study
<i>Natrix natrix persa</i> (Pallas, 1814)	Azerbaijan: Calilabad	1	MTD T 8956	HF679821	HF680120	This study
<i>Natrix natrix persa</i> (Pallas, 1814)	Azerbaijan: Istisu: near Astara	1	MTD T 3680	-----	HF680121	This study
<i>Natrix natrix persa</i> (Pallas, 1814)	Azerbaijan: Qazimammad	1	MTD T 8957	-----	HF680122	This study
<i>Natrix natrix persa</i> (Pallas, 1814)	Bosnia and Herzegovina: Hutovo Blato	5	MTD T 8644	HF679822	HF680123	This study
<i>Natrix natrix persa</i> (Pallas, 1814)	Bosnia and Herzegovina: Hutovo Blato	5	MTD T 8645	HF679823	HF680124	This study
<i>Natrix natrix persa</i> (Pallas, 1814)	Bosnia and Herzegovina: Maglič Mountain: Prijevor	4	MTD T 8976	HF679824	HF680125	This study
<i>Natrix natrix persa</i> (Pallas, 1814)	Bulgaria: Albena	3	MTD D 40692	-----	HF680126	This study
<i>Natrix natrix persa</i> (Pallas, 1814)	Bulgaria: Arkutino	7	ZFMK 59679	HF679825	-----	This study
<i>Natrix natrix persa</i> (Pallas, 1814)	Bulgaria: Bezhanovo	4	MTD T 8653	HF679826	HF680127	This study
<i>Natrix natrix persa</i> (Pallas, 1814)	Bulgaria: Etropole	4	MTD T 8654	HF679827	HF680128	This study
<i>Natrix natrix persa</i> (Pallas, 1814)	Bulgaria: Levunovo	3	MTD D 18923	HF679828	HF680129	This study
<i>Natrix natrix persa</i> (Pallas, 1814)	Bulgaria: Levunovo	3	MTD D 18924	HF679829	HF680130	This study
<i>Natrix natrix persa</i> (Pallas, 1814)	Bulgaria: Malko Gradište (pass)	7	MTD T 9321	HF679830	HF680131	This study
<i>Natrix natrix persa</i> (Pallas, 1814)	Bulgaria: Malko Tarnovo District	7	CAS 219930	AY873717	AY866542	Guicking <i>et al.</i> (2006)
<i>Natrix natrix persa</i> (Pallas, 1814)	Bulgaria: Mičurin	4	MTD D 29984	HF679831	HF680132	This study
<i>Natrix natrix persa</i> (Pallas, 1814)	Bulgaria: Novo Selo	3	MTD T 9910	-----	HF680133	This study
<i>Natrix natrix persa</i> (Pallas, 1814)	Bulgaria: Pejo Javorov	3	MTD T 9012	HF679832	HF680134	This study
<i>Natrix natrix persa</i> (Pallas, 1814)	Bulgaria: Pejo Javorov	3	MTD T 9013	HF679833	HF680135	This study
<i>Natrix natrix persa</i> (Pallas, 1814)	Bulgaria: Ropotamo	7	MTD T 9318	HF679834	HF680136	This study
<i>Natrix natrix persa</i> (Pallas, 1814)	Bulgaria: Ropotamo	7	MTD T 9319	HF679835	HF680137	This study
<i>Natrix natrix persa</i> (Pallas, 1814)	Bulgaria: Sandanska Bistrica Valley	3	MTD D 20867	HF679836	HF680138	This study
<i>Natrix natrix persa</i> (Pallas, 1814)	Bulgaria: Sandanski	3	MTD D 19566	HF679837	HF680139	This study
<i>Natrix natrix persa</i> (Pallas, 1814)	Bulgaria: Shipka pass	7	MTD T 8649	HF679838	HF680140	This study
<i>Natrix natrix persa</i> (Pallas, 1814)	Croatia: Benkovac	4	ZFMK 92199	HF679839	HF680141	This study
<i>Natrix natrix persa</i> (Pallas, 1814)	Croatia: near Šibenik: Krka falls	4	ZFMK 54709	HF679840	-----	This study
<i>Natrix natrix persa</i> (Pallas, 1814)	Croatia: Plitvice	4	ZFMK 54707	HF679841	HF680142	This study
<i>Natrix natrix persa</i> (Pallas, 1814)	Croatia: Vransko Jezero	4	MTD T 9873	HF679842	-----	This study
<i>Natrix natrix persa</i> (Pallas, 1814)	Croatia: Vransko Jezero	4	MTD T 9874	HF679843	-----	This study
<i>Natrix natrix persa</i> (Pallas, 1814)	Former Yugoslav Republic of Macedonia: Jakubica Mountains	3	MTD T 9911	HF679844	HF680143	This study
<i>Natrix natrix persa</i> (Pallas, 1814)	Former Yugoslav Republic of Macedonia: National Park Galičica	5	MTD T 9877	HF679845	HF680144	This study
<i>Natrix natrix persa</i> (Pallas, 1814)	Former Yugoslav Republic of Macedonia: Porodin	5	MTD T 9909	HF679846	HF680145	This study

■ Table S1 continued ■			Genbank accession numbers			
Taxon	Collecting site	Clade	Voucher	ND4+tRNAs	Cyt <i>b</i>	Reference
<i>Natrix natrix persa</i> (Pallas, 1814)	Former Yugoslav Republic of Macedonia: Stenje	5	MTD T 8633	HF679847	HF680146	This study
<i>Natrix natrix persa</i> (Pallas, 1814)	Georgia: approx. 80 km NE Telavi	2	MTD D 26659	HF679848	HF680147	This study
<i>Natrix natrix persa</i> (Pallas, 1814)	Georgia: Batumi	8	ZFMK 76546	HF679849	HF680148	This study
<i>Natrix natrix persa</i> (Pallas, 1814)	Georgia: Batumi	8	-----	AY873725	AY487736	Guicking <i>et al.</i> (2006)
<i>Natrix natrix persa</i> (Pallas, 1814)	Georgia: Borshomi	8	ZFMK 73721	HF679850	HF680149	This study
<i>Natrix natrix persa</i> (Pallas, 1814)	Georgia: Borshomi	8	ZFMK 73722	-----	HF680150	This study
<i>Natrix natrix persa</i> (Pallas, 1814)	Georgia: Kumisi	2	MTD T 9337	HF679851	HF680151	This study
<i>Natrix natrix persa</i> (Pallas, 1814)	Georgia: Kutaisi	8	MTD T 8960	HF679852	HF680152	This study
<i>Natrix natrix persa</i> (Pallas, 1814)	Georgia: Mtskheta	8	MTD T 9341	HF679853	HF680153	This study
<i>Natrix natrix persa</i> (Pallas, 1814)	Georgia: N Stepanzmina	8	MTD T 9339	HF679854	HF680154	This study
<i>Natrix natrix persa</i> (Pallas, 1814)	Georgia: N Stepanzmina	8	MTD T 9340	HF679855	HF680155	This study
<i>Natrix natrix persa</i> (Pallas, 1814)	Georgia: Sakdrioni	2	MTD T 9338	HF679856	HF680156	This study
<i>Natrix natrix persa</i> (Pallas, 1814)	Georgia: Telavi	2	MTD T 8958	HF679857	HF680157	This study
<i>Natrix natrix persa</i> (Pallas, 1814)	Georgia: Telavi	2	MTD T 8959	HF679858	HF680158	This study
<i>Natrix natrix persa</i> (Pallas, 1814)	Greece: Chalkidiki: N Stratoni	3	ZFMK 62945	HF679859	HF680159	This study
<i>Natrix natrix persa</i> (Pallas, 1814)	Greece: Chalkidiki: N Stratoni	3	ZFMK 69946	HF679860	HF680160	This study
<i>Natrix natrix persa</i> (Pallas, 1814)	Greece: Cyclades: Paros	4	MTD D 25827	HF679861	-----	This study
<i>Natrix natrix persa</i> (Pallas, 1814)	Greece: Dadía	7	MTD T 8646	HF679862	HF680161	This study
<i>Natrix natrix persa</i> (Pallas, 1814)	Greece: Ioánnina	5	-----	AY873716	AY487725	Guicking <i>et al.</i> (2006)
<i>Natrix natrix persa</i> (Pallas, 1814)	Greece: Kythira	5	MTD D 25843	HF679863	HF680162	This study
<i>Natrix natrix persa</i> (Pallas, 1814)	Greece: Little Prespa Lake near Florina	5	ZFMK 54702	HF679864	HF680163	This study
<i>Natrix natrix persa</i> (Pallas, 1814)	Greece: Nestos Delta	3	ZFMK 71679	-----	HF680164	This study
<i>Natrix natrix persa</i> (Pallas, 1814)	Greece: Peloponnesus: Itilo	5	ZFMK 62500	HF679865	-----	This study
<i>Natrix natrix persa</i> (Pallas, 1814)	Greece: Peloponnesus: Kalogria	5	ZFMK 65179	HF679866	-----	This study
<i>Natrix natrix persa</i> (Pallas, 1814)	Greece: Peloponnesus: Kalogria	5	-----	KC570260	KC570306	This study
<i>Natrix natrix persa</i> (Pallas, 1814)	Greece: Peloponnesus: Kato Kastanea	5	ZFMK 71680	HF679867	HF680165	This study
<i>Natrix natrix persa</i> (Pallas, 1814)	Greece: Peloponnesus: Limni Strofilia near Kalogria	5	ZFMK 92217	HF679868	HF680166	This study
<i>Natrix natrix persa</i> (Pallas, 1814)	Greece: Peloponnesus: Pylos	5	ZFMK 82103	HF679869	HF680167	This study
<i>Natrix natrix persa</i> (Pallas, 1814)	Greece: Peloponnesus: Pylos	5	ZFMK 83029	HF679870	HF680168	This study
<i>Natrix natrix persa</i> (Pallas, 1814)	Greece: Peloponnesus: Pylos	5	ZFMK 84037	HF679871	HF680169	This study
<i>Natrix natrix persa</i> (Pallas, 1814)	Greece: Peloponnesus: Pylos	5	ZFMK 86043	HF679872	HF680170	This study
<i>Natrix natrix persa</i> (Pallas, 1814)	Greece: Peloponnesus: Pylos	5	ZFMK 86045	-----	HF680171	This study
<i>Natrix natrix persa</i> (Pallas, 1814)	Greece: Samos	7	ZFMK 89415	HF679873	-----	This study

■ Table S1 continued ■			Genbank accession numbers			
Taxon	Collecting site	Clade	Voucher	ND4+tRNAs	Cyt b	Reference
<i>Natrix natrix persa</i> (Pallas, 1814)	Greece: Samos: Agios Konstantinos	7	ZFMK 65117	-----	HF680172	This study
<i>Natrix natrix persa</i> (Pallas, 1814)	Greece: Skiros	3	MTD T 9907	HF679874	HF680173	This study
<i>Natrix natrix persa</i> (Pallas, 1814)	Greece: Thessaloniki	3	MTD T 8639	HF679875	-----	This study
<i>Natrix natrix persa</i> (Pallas, 1814)	Greece: Volos	3	MTD D 29269	HF679876	HF680174	This study
<i>Natrix natrix persa</i> (Pallas, 1814)	Greece: Xanthus: Avdira	3	ZFMK 62956	HF679877	HF680175	This study
<i>Natrix natrix persa</i> (Pallas, 1814)	Greece: Xanthus: Avdira	3	ZFMK 92957	HF679878	-----	This study
<i>Natrix natrix persa</i> (Pallas, 1814)	Greece: Xanthus: Jasmos	7	ZFMK 62958	HF679879	-----	This study
<i>Natrix natrix persa</i> (Pallas, 1814)	Iran: Kermanshah Province	1	-----	AY487800	AY487756	Guicking (2004)
<i>Natrix natrix persa</i> (Pallas, 1814)	Iran: Nowshahr	1	MTD T 8954	HF679880	HF680176	This study
<i>Natrix natrix persa</i> (Pallas, 1814)	Montenegro: near island Ada	5	ZFMK 92216	HF679881	HF680177	This study
<i>Natrix natrix persa</i> (Pallas, 1814)	Montenegro: Sasovići, Zelenica, Boka kotorska	5	MTD T 9875	HF679882	HF680178	This study
<i>Natrix natrix persa</i> (Pallas, 1814)	Montenegro: Skutari Lake: Limljani	5	ZFMK 92205	HF679883	HF680179	This study
<i>Natrix natrix persa</i> (Pallas, 1814)	Montenegro: Skutari Lake: Limljani	5	ZFMK 92206	HF679884	HF680180	This study
<i>Natrix natrix persa</i> (Pallas, 1814)	Montenegro: Spuz	5	MTD T 9908	HF679885	HF680181	This study
<i>Natrix natrix persa</i> (Pallas, 1814)	Romania: Chilia Veche	4	MTD T 9889	HF679886	-----	This study
<i>Natrix natrix persa</i> (Pallas, 1814)	Romania: Constanța: Histria	4	ZFMK 82775	-----	HF680182	This study
<i>Natrix natrix persa</i> (Pallas, 1814)	Russia: Dagestan: Machačkala	8	ZFMK 65692	HF679887	HF680183	This study
<i>Natrix natrix persa</i> (Pallas, 1814)	Russia: Dagestan: Samur	2	ZFMK 62940	-----	HF680184	This study
<i>Natrix natrix persa</i> (Pallas, 1814)	Russia: Dagestan: Tatayurt	8	ZFMK 62936	HF679888	HF680185	This study
<i>Natrix natrix persa</i> (Pallas, 1814)	Turkey: Aegean Region: between Söke and Doğanbey	7	ZFMK 47034	-----	HF680186	This study
<i>Natrix natrix persa</i> (Pallas, 1814)	Turkey: Aegean Region: Dalyan	7	ZFMK 82946	HF679889	HF680187	This study
<i>Natrix natrix persa</i> (Pallas, 1814)	Turkey: Aegean Region: Selçuk	7	MTD D 25227	HF679890	HF680188	This study
<i>Natrix natrix persa</i> (Pallas, 1814)	Turkey: Aegean Region: Selçuk	7	MTD D 25228	HF679891	-----	This study
<i>Natrix natrix persa</i> (Pallas, 1814)	Turkey: Aegean Region: Selçuk	7	MTD D 25229	HF679892	-----	This study
<i>Natrix natrix persa</i> (Pallas, 1814)	Turkey: Aegean Region: Selçuk	7	MTD D 25230	HF679893	HF680189	This study
<i>Natrix natrix persa</i> (Pallas, 1814)	Turkey: Aegean Region: Tavas	7	-----	KC570261	KC570311	This study
<i>Natrix natrix persa</i> (Pallas, 1814)	Turkey: Black Sea Region: between Hopa and Arhavi	8	ZFMK 71143	-----	HF680190	This study
<i>Natrix natrix persa</i> (Pallas, 1814)	Turkey: Black Sea Region: between Hopa and Arhavi	8	ZFMK 71144	-----	HF680191	This study
<i>Natrix natrix persa</i> (Pallas, 1814)	Turkey: Black Sea Region: Borçka	8	ZFMK 71145	HF679894	HF680192	This study
<i>Natrix natrix persa</i> (Pallas, 1814)	Turkey: Black Sea Region: Hattuşa (Sarıkale)	8	-----	AY873722	AY487726	Guicking <i>et al.</i> (2006)
<i>Natrix natrix persa</i> (Pallas, 1814)	Turkey: Black Sea Region: Yeniçağa	8	-----	AY873721	AY487730	Guicking <i>et al.</i> (2006)
<i>Natrix natrix schweizeri</i> L. Müller, 1932	Greece: Cyclades: Milos	3	MTD D 19183	-----	HF680193	This study
<i>Natrix natrix schweizeri</i> L. Müller, 1932	Greece: Cyclades: Milos	3	ZFMK 85407	HF679895	-----	This study

■ Table S1 continued ■			Genbank accession numbers			
Taxon	Collecting site	Clade	Voucher	ND4+tRNAs	Cyt <i>b</i>	Reference
<i>Natrix natrix scutata</i> (Pallas, 1771)	Kazakhstan: Emba River	8	-----	AY487794	AY487749	Guicking <i>et al.</i> (2006)
<i>Natrix natrix scutata</i> (Pallas, 1771)	Russia: Bryansk	8	ZFMK 91040	HF679896	HF680194	This study
<i>Natrix natrix scutata</i> (Pallas, 1771)	Russia: Bryansk	8	ZFMK 91041	HF679897	HF680195	This study
<i>Natrix natrix scutata</i> (Pallas, 1771)	Russia: Penza District	8	-----	AY487798	AY487754	Guicking (2004)
<i>Natrix natrix scutata</i> (Pallas, 1771)	Russia: Samara District	8	-----	AY487797	AY487753	Guicking <i>et al.</i> (2006)
<i>Natrix natrix scutata</i> (Pallas, 1771)	Russia: Tula District	8	CAS 175878	AY873724	AF471059	Lawson <i>et al.</i> (2005), Guicking <i>et al.</i> (2006)
<i>Natrix natrix scutata</i> (Pallas, 1771)	Russia: Tula: S Tula: Chopr River	8	ZFMK 70614	HF679898	HF680196	This study
<i>Natrix natrix scutata</i> (Pallas, 1771)	Russia: Tula: S Tula: Chopr River	8	ZFMK 72270	HF679899	HF680197	This study
<i>Natrix natrix sicula</i> (Cuvier, 1829)	Italy: Calabria	F	ZFMK 90574	HF679900	HF680198	This study
<i>Natrix natrix sicula</i> (Cuvier, 1829)	Italy: Calabria: Serro San Bruno	A	-----	KC570265	KC570305	This study
<i>Natrix natrix sicula</i> (Cuvier, 1829)	Italy: Sicily: Agrigento: Siculiana: Biosphere Reserve Torre Salsa	A	MTD T 2116	HF679901	-----	This study
<i>Natrix natrix sicula</i> (Cuvier, 1829)	Italy: Sicily: Caronia (Castello di Marescotto)	A	-----	KC570264	KC570304	This study
<i>Natrix natrix sicula</i> (Cuvier, 1829)	Italy: Sicily: Lago di Pergusa	A	MZUF 24175	-----	HF680199	This study
<i>Natrix natrix sicula</i> (Cuvier, 1829)	Italy: Sicily: Siracusa: Vendicari	A	MTD T 8464	HF679902	HF680200	This study
<i>Natrix natrix syriaca</i> (Hecht, 1930)	Turkey: Mediterranean Region: Burmaz (near Botaş)	6	ZFMK 71176	HF679903	HF680201	This study
<i>Natrix natrix syriaca</i> (Hecht, 1930)	Turkey: Mediterranean Region: SW Osmaniye	6	-----	KC570263	KC570308	This study
<b>Outgroups:</b>						
<i>Natrix maura</i> (Linnaeus, 1758)	Spain: Southern Spain	—	MNCN 12016	AY873708	AY866530	Guicking <i>et al.</i> (2006)
<i>Natrix tessellata</i> (Laurenti, 1768)	Armenia: Geolazar	—	ROM 23418	AY873734	AY866531	Guicking <i>et al.</i> (2006)
<i>Nerodia sipedon</i> (Linnaeus, 1758)	USA: Tennessee	—	-----	JF964960	JF964960	GenBank

Museum acronyms of voucher specimens: CAS – California Academy of Sciences, San Francisco, California; LSUMZ – Louisiana Museum of Natural History, Baton Rouge, Louisiana; MNCN – Museo Nacional de Ciencias Naturales, Madrid; MTD D – Museum of Zoology, Senckenberg Dresden (Herpetological Collection); MTD T – Museum of Zoology, Senckenberg Dresden (Tissue Collection); MWLK – Museum der Westlausitz, Kamenz; MZUF – Museo di Storia Naturale dell’Università di Firenze, Sezione di Zoologia “La Specola”; ROM – Royal Ontario Museum, Department of Natural History, Toronto, Ontario; ZFMK – Zoologisches Forschungsmuseum Alexander Koenig, Bonn; ZMUO – Zoologisk museum, Universitetet i Oslo.

**Table S2** Primers used for PCR and sequencing. For primer combinations and PCR conditions, see Table S3

mtDNA fragment	Primer	Direction	Primer sequence (5' to 3')	Reference
ND4+tRNAs	ND4ab	Forward	CACCTATGACTACCAAAAGCTCATGTAGAAGC	Guicking <i>et al.</i> (2006)
ND4	Natrix_ND4_For1	Forward	GGATCAAT(AG)GT(AG)CTAGCAGC	This study
ND4	Natrix_ND4_For2	Forward	CAAACAGACTTAAAATC(AC)CT	This study
ND4+tRNAs	Natrix_ND4_For3	Forward	CCCAGCATTAATTT(CT)AC(AGT)GG	This study
ND4	ND4F_nat	Forward	GGATCAAT(AG)GTACTAGCAGC	This study
ND4+tRNAs	tRNA-leu	Reverse	CATTACTTTTACTTGGATTTGCACCA	Guicking <i>et al.</i> (2006)
ND4	Natrix_ND4_Rev1_neu	Reverse	(CT)AG(AG)CTTCA(GT)TGTGTTTGGGA	This study
ND4	Natrix_ND4_Rev2	Reverse	AATTGTTGTTGGGCATCA	This study
ND4	ND4R_nat	Reverse	ATTCAGGTTTTAT(CT)GAGATAAG	This study
cyt b	L14724NAT	Forward	GACCTGCGGTCCGAAAAACCA	Guicking <i>et al.</i> (2006)
cyt b	Natrix_Cytb_For2	Forward	CCCTACGGATGAATAATACAAAA(CT)AC	This study
cyt b	Natrix_Cytb_For3	Forward	CTAGGAAA(CT)ACCCTCACAAACC	This study
cyt b	Natrix_Cytb_For4	Forward	TACCACTCACACAAAGA(CT)ATA(CT)TA(CT)	This study
cyt b	Natrix_Cytb_For5	Forward	ATAAACT(CGT)GG(AGT)GG(AG)ACAA	This study
cyt b	CBF_nat	Forward	GTAGGCCTAAATATTTTC(AG)ACCTG	This study
cyt b	inCBF_nat	Forward	ACCCTCACAAACCTGACTCTG	This study
cyt b	Thrsnr2	Reverse	CTTTGGTTTACAAGAACAATGCTTTA	Guicking <i>et al.</i> (2006)
cyt b	Natrix_Cytb_Rev2	Reverse	AGGGCAAAGAATCGGGTT	This study
cyt b	Natrix_Cytb_Rev3_neu	Reverse	TTAATGTGTTG(AG)GGGGTTACTA	This study
cyt b	Natrix_Cytb_Rev4_neu	Reverse	AGGTGTGGGTGAA(ACT)GG(CT)A	This study
cyt b	inCBR_nat	Reverse	TCAGTGTGAAGAAGTATAATGTG	This study
cyt b	CBR_nat	Reverse	GTTGTTATAAAAAATGT(AG)AAGTA	This study



**Table S3** PCR protocols

mtDNA fragment	Primer combinations	Thermocycling conditions					
		ID	C	D	A	E	FE
ND4+tRNAs	ND4ab, tRNA-leu	94°C, 5 min	35	94°C, 45 s	55°C, 45 s	72°C, 60 s	72°C, 10 min
ND4	ND4ab, Natrix_ND4_Rev2	94°C, 5 min	40	94°C, 45 s	56°C, 45 s	72°C, 40 s	72°C, 10 min
ND4	Natrix_ND4_For1, Natrix_ND4_Rev1_neu	94°C, 5 min	40	94°C, 45 s	56°C, 45 s	72°C, 30 s	72°C, 10 min
ND4	Natrix_ND4_For2, Natrix_ND4_Rev2	94°C, 5 min	40	94°C, 45 s	56°C, 45 s	72°C, 30 s	72°C, 10 min
ND4+tRNAs	Natrix_ND4_For3, tRNA-leu	94°C, 5 min	40	94°C, 45 s	56°C, 45 s	72°C, 30 s	72°C, 10 min
ND4	ND4F_nat, ND4R_nat	94°C, 5 min	35	94°C, 30 s	50°C, 45 s	72°C, 80 s	72°C, 5 min
<i>cyt b</i>	L14724NAT, Thrsnr2	94°C, 5 min	35	94°C, 45 s	55°C, 45 s	72°C, 60 s	72°C, 10 min
<i>cyt b</i>	L14724NAT, Natrix_Cytb_Rev2	94°C, 5 min	40	94°C, 45 s	54°C, 45 s	72°C, 40 s	72°C, 10 min
<i>cyt b</i>	Natrix_Cytb_For2, Natrix_Cytb_Rev2	94°C, 5 min	40	94°C, 45 s	56°C, 45 s	72°C, 30 s	72°C, 10 min
<i>cyt b</i>	Natrix_Cytb_For3, Natrix_Cytb_Rev3_neu	94°C, 5 min	40	94°C, 45 s	56°C, 45 s	72°C, 30 s	72°C, 10 min
<i>cyt b</i>	Natrix_Cytb_For3, Thrsnr2	94°C, 5 min	40	94°C, 45 s	54°C, 45 s	72°C, 40 s	72°C, 10 min
<i>cyt b</i>	Natrix_Cytb_For4, Natrix_Cytb_Rev4_neu	94°C, 5 min	40	94°C, 45 s	56°C, 45 s	72°C, 30 s	72°C, 10 min
<i>cyt b</i>	Natrix_Cytb_For4, Thrsnr2	94°C, 5 min	40	94°C, 45 s	56°C, 45 s	72°C, 40 s	72°C, 10 min
<i>cyt b</i>	Natrix_Cytb_For5, Thrsnr2	94°C, 5 min	40	94°C, 45 s	54°C, 45 s	72°C, 30 s	72°C, 10 min
<i>cyt b</i>	CBF_nat/inCBR_nat	94°C, 5 min	35	94°C, 30 s	52°C, 45 s	72°C, 70 s	72°C, 5 min
<i>cyt b</i>	inCBF_nat/CBR_nat	94°C, 5 min	35	94°C, 30 s	44°C, 45 s	72°C, 80 s	72°C, 5 min

Abbreviations: ID = initial denaturing, C = number of cycles, D = denaturing, A = annealing, E = extension, FE = final extension.

**Table S4** Mean uncorrected  $p$  distances (percentages) between and within mtDNA clades of grass snakes (top: ND4+tRNAs, bottom: *cyt b*). Below the diagonal, divergences between groups; on the diagonal, within group divergences in boldface

ND4+tRNAs	<i>n</i>	Tu	Eu	1	2	3	4	5	6	7	8	A	B	C	D	E	F
Tu	1	—															
Eu	23	3.13	<b>0.12</b>														
1	3	5.12	5.78	<b>0.33</b>													
2	5	5.17	6.12	0.72	<b>0.13</b>												
3	78	5.41	6.13	4.49	4.67	<b>0.20</b>											
4	118	5.98	6.73	4.66	4.70	5.33	<b>0.21</b>										
5	22	5.60	6.25	4.47	4.53	5.06	0.55	<b>0.17</b>									
6	2	5.69	5.79	4.63	4.90	4.32	4.41	4.35	<b>0</b>								
7	17	4.95	5.70	3.70	3.97	4.28	3.63	3.41	2.95	<b>0.63</b>							
8	33	6.17	6.76	5.01	5.25	5.56	4.93	4.91	3.99	2.37	<b>0.23</b>						
A	4	6.29	6.74	6.08	6.55	4.85	7.15	6.61	6.14	5.84	7.16	<b>0.08</b>					
B	7	4.74	5.43	4.11	4.41	4.79	5.18	5.01	4.52	3.92	4.91	4.71	<b>0.06</b>				
C	3	5.90	5.78	5.44	5.77	4.93	5.95	5.72	5.06	4.82	5.93	5.03	2.12	<b>0</b>			
D	1	6.62	6.93	5.92	6.28	5.91	7.29	7.06	6.24	6.00	6.77	6.12	2.98	2.92	—		
E	41	5.49	6.30	5.18	5.33	5.17	6.02	5.84	5.73	5.05	6.02	5.72	2.19	2.32	0.80	<b>0.03</b>	
F	10	5.25	6.02	5.18	5.30	5.15	6.27	6.11	5.69	5.05	6.05	5.63	2.18	2.32	0.78	0.29	<b>0</b>
<b><i>cyt b</i></b>																	
Tu	1	—															
Eu	26	4.52	<b>0.25</b>														
1	6	6.71	5.83	<b>0.31</b>													
2	6	6.69	6.05	1.43	<b>0.47</b>												
3	81	6.48	6.62	4.51	4.59	<b>0.19</b>											
4	99	6.79	6.64	4.78	5.02	5.26	<b>0.42</b>										
5	21	6.34	6.37	4.34	4.57	4.76	1.38	<b>0.21</b>									
6	2	6.86	6.82	5.02	5.41	5.74	5.20	4.89	<b>0.10</b>								
7	15	6.02	5.38	3.90	3.90	4.27	4.14	3.85	3.81	<b>0.62</b>							
8	37	6.49	6.67	5.19	5.26	5.19	4.80	4.96	4.16	3.23	<b>0.39</b>						
A	4	6.69	6.27	5.11	5.33	5.87	6.03	5.58	6.13	4.76	5.60	<b>0.05</b>					
B	6	7.07	7.51	6.29	6.25	6.73	6.47	5.89	7.10	6.08	6.70	4.86	<b>0.16</b>				
C	3	6.80	7.20	5.74	5.80	6.62	5.73	5.20	6.12	5.24	5.88	4.71	3.11	<b>0</b>			
D	1	6.78	7.27	5.91	6.15	7.06	5.83	5.52	6.97	5.98	6.58	5.36	3.52	2.06	—		
E	30	6.93	7.11	5.68	5.88	6.63	6.16	5.66	6.94	5.74	6.54	5.07	3.42	2.45	1.16	<b>0.05</b>	
F	11	6.81	6.99	5.71	5.89	6.66	6.14	5.63	7.01	5.66	6.52	5.11	3.33	2.33	0.91	0.28	<b>0.07</b>

### **Additional References**

Guicking, D. (2004). *Molecular Phylogeography and Evolution of Western Palaeartic Water Snakes (Genus *Natrix*, Reptilia)*. Dissertation, Heidelberg: Heidelberg University, Combined Faculties for the Natural Sciences and Mathematics, 160 pp.

Lawson, R., Slowinski, J.B., Crother, B.I. & Burbrink, F.T. (2005). Phylogeny of the Colubroidea (Serpentes): New evidence from mitochondrial and nuclear genes. *Molecular Phylogenetics and Evolution*, 37, 581–601.